

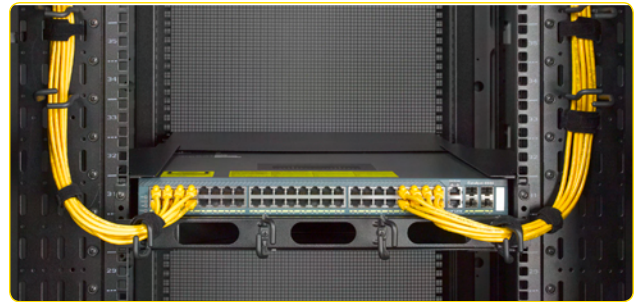
# airflow manager for 1U switches

complete airflow and cable management solution

The Airflow Manager is designed to be used on Cisco® Catalyst 4948 switches. The Airflow Manager can be utilized in any enclosure that meets the EIA-310-D specification. The kit includes everything needed to mount the switch, control airflow and manage cabling. This 2U device can be mounted to face either the hot or cold aisle and still direct the airflow properly.

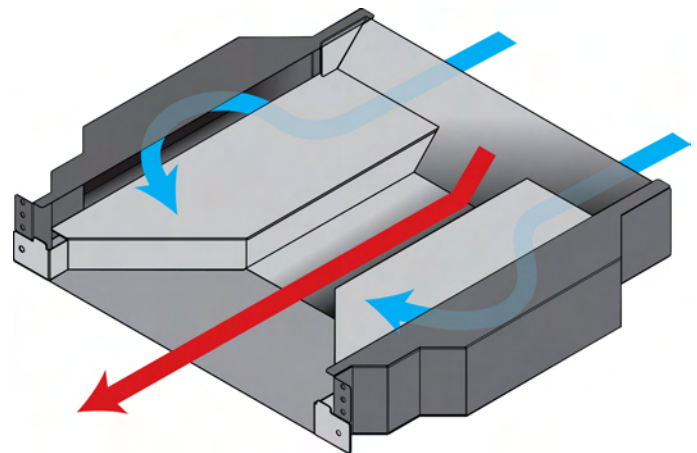
The Airflow Manager draws air from the cold aisle, directs it to the air intake ports on the side of the switch and exhausts out the rear of the switch into the hot aisle. The Airflow Manager includes a removable cable manager that allows cables to travel from the switch to the rails. Cables can then be routed to their termination point and secured to the cable rings with Velcro® straps. The cable manager can be mounted in front of, below, or above the switch. The switch's power cord is routed internally through the airflow director to the power source.

The cable manager contains openings so exhaust air can exit the Airflow Manager when mounted in front of the switch. The Airflow Manager can accommodate a maximum rail setting of 29.25" and a minimum rail setting of 21.32" and allows for the switch to be mounted facing the front or the rear of the enclosure.



## Features:

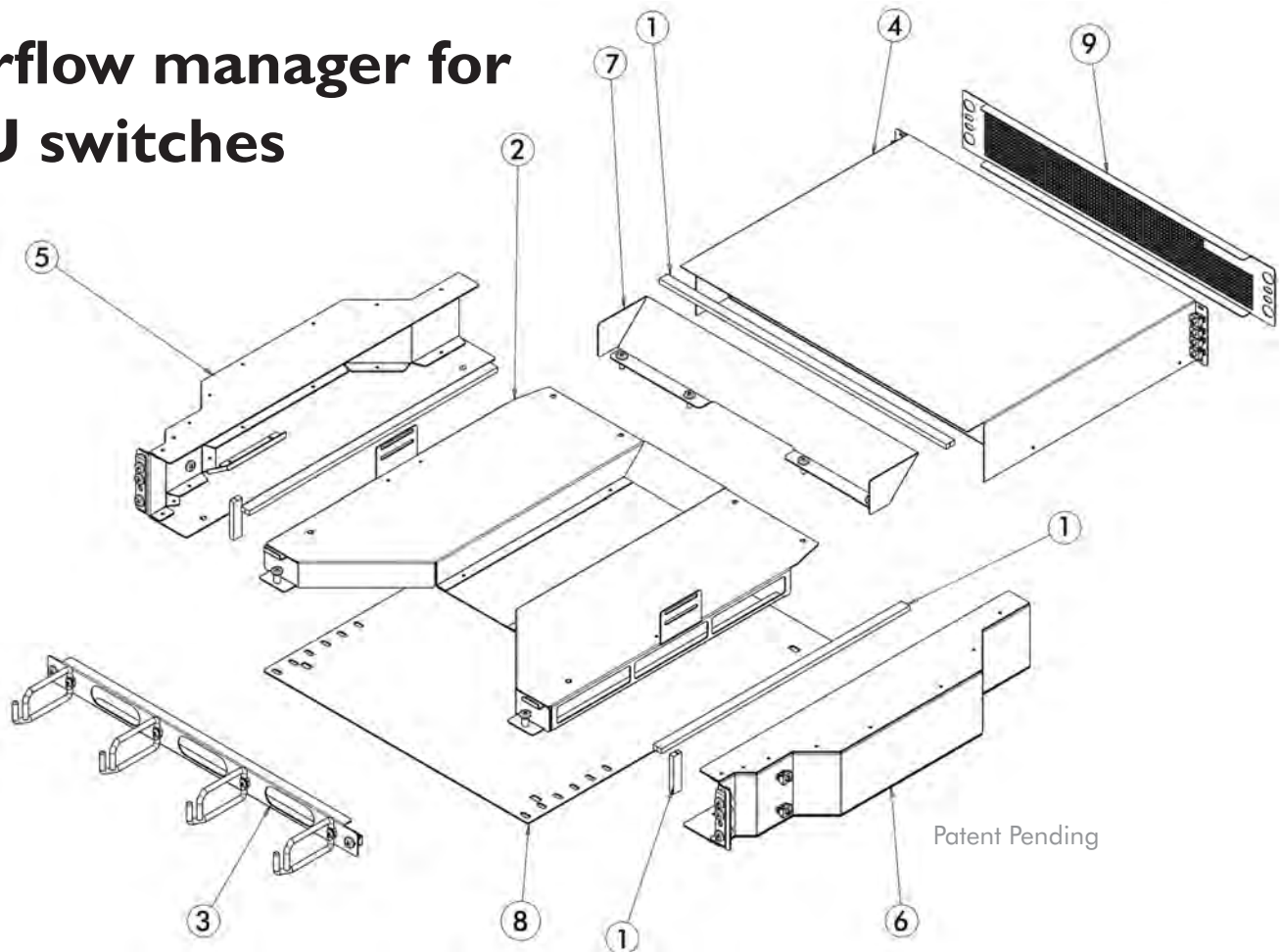
- Helps eliminate overheating of network racks and other nearby equipment by maintaining front to rear airflow.
- Improves efficiency by preventing cold air from mixing with hot air.
- Allows the switch assembly to be mounted facing the front or rear of the enclosure.
- Resolves the difficult issue of how to mount a switch with unique airflow requirements.



wright • line

consoles • enclosures  
office & technical furniture

# airflow manager for IU switches



1. **Foam Tape** – Foam tape applied to seal any openings, which will help prevent bypass airflow.
2. **Airflow Manager** – The switch rests on the Airflow Manager and should be secured directly to the Airflow Manager when applicable. The switch should always be rear justified to the exhaust deflector.
3. **Cable Manager** – A cable manager is included, but its use is optional and dependent upon your configuration. Large openings allow for heat exhaust offering the flexibility to mount the cable manager in front, above or below the airflow manager. Cables should be secured to the cable rings using a Velcro strap (BX45V11) for strain relief.  
(Note: cable straps are not provided.)
4. **Intake/Exhaust Tunnel** – The intake/exhaust tunnel serves as either the air intake component for a rear mounted switch or air exhaust component for a front mounted switch. Please see the installation guide for more detailed instructions.
5. **Left Side Air Deflector** – Directs cold air from under the Airflow Manager into the left side of the switch.
6. **Right Side Air Deflector** – Directs cold air from under the Airflow Manager into the right side of the switch.
7. **Removable Air Exhaust Deflector** – When the switch is mounted in the rear of the enclosure the removable air exhaust deflector blocks hot air from migrating to the front of the enclosure. It also directs the air to the exhaust channel below where the hot air then exits into the hot aisle. The airflow exhaust deflector is removed when the switch is mounted in the front of the enclosure, allowing hot air to exhaust directly to the hot aisle.
8. **Support Shelf** – This shelf supports the weight of the switch and helps contain the cold air intake. The plate is free floating; it has four rectangular cut-outs that nest with four bosses located on the left and right air deflectors.
9. **Grill** – The grill will stop any large pieces of debris from entering the Airflow Manager. Its use is recommended, but not required.

wright • line

consoles • enclosures  
office & technical furniture